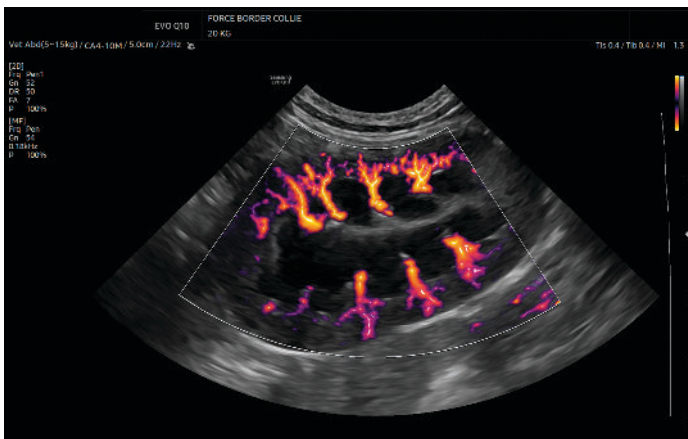


EVO Q10

Clarity on the Move

Quality Imaging



Abdomen with MV-Flow™

For Advanced Doppler visualization of blood flow.



ClearVision™ Noise Reduction

For Precision Edge Detection, providing a cleaner and more detailed image.

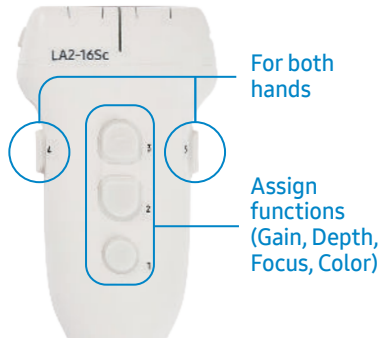


Efficiency for Exams

Hands-free operation



Voice command allows for efficient scanning without straining or repositioning yourself, no matter the animal's size.



Button probe enables intuitive, effortless control with assignable buttons for key functions.

MirrorTouch™

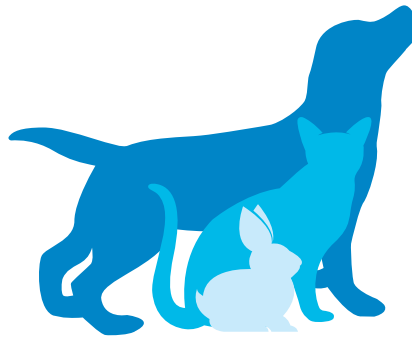


Mirrored touchscreen keeps focus on touchscreen image, enabling seamless and intuitive control.

Fast-paced environments



3-port Probe Connector: Expands the laptop's standard single active probe port allowing up to three (3) additional probes simultaneously. Users can switch between transducers electronically without manually unplugging and replugging during exams.



Weight-Based Optimization: The EVO Q10 features dedicated presets stratified by animal size (Small <5kg, Medium 5-15kg, and Large >15kg) allowing for instant image optimization across the diverse range of patients seen in a vet clinic.



Sealed Key Board: IP22-rated waterproof control panel with minimal contact points, enabling safe and thorough disinfection.

For more information visit our website: Oncurapartners.com
Or scan this QR to be contacted!

